

Voice guided system control

The user should call the GSV5 module to control the alarm system or get information about its present status via a phone call. The module will answer with a greeting followed by a command to enter a PIN code and to press the hash key (#). **Note:** Contact your installer for more information about which PIN number to use for different GSV5 operating modules.

The user will be informed about the status of the system and introduced to its control menu only if the PIN code is accepted, otherwise an error message will sound. Control of the system can be accomplished by following vocal commands of the system, entering numbers corresponding to a control command, and pressing the # key. For example: to arm the system - 1#, to disarm the system - 0#, to clear an alarm - 00#, and etc.

During an alarm the user might get a phone call from the GSV5 module, which will provide information about the alarm. Answering the phone call and hearing vocal information about the alarm will allow a user to choose from finishing the call by pressing 0#, or to control the system by entering the PIN code and pressing #. Module GSV5 will keep calling if the user will hang up the phone without listening to its messages with options.

GSV5 control with a SMS commands

Begin SMS with a PIN code followed by a command. Example of SMS text: **1111A** - where **1111** is user's PIN code and **A** is a command to arm the system. There must be space between each command. Example of SMS text: **1111A B2** - where **1111** is user's PIN code, **A** - arming command, and **B2** - bypass 2nd zone.

GSV5 operating mode: GSM/GPRS communicator	
A	Turn On the output with definition <i>Arm</i> . SMS example: 1111A.
D	Turn On the output with definition <i>Disarm</i> . SMS example: 1111D.
C	Turn On the output with definition <i>Clear alarm</i> . SMS example: 1111C.
ON?	Turn On the output with definition <i>Manual</i> (ON1 - PGM1, ON2 - PGM2). SMS example: 1111ON1.
OF?	Turn Off the output with definition <i>Manual</i> (OF1 - PGM1, OF2 - PGM2). SMS example: 1111OF2.
F	Send SMS to a phone number via GSV5. Example: 1111Fphone number. Phone number in the text message must be entered in international format, "+" sign is added automatically.

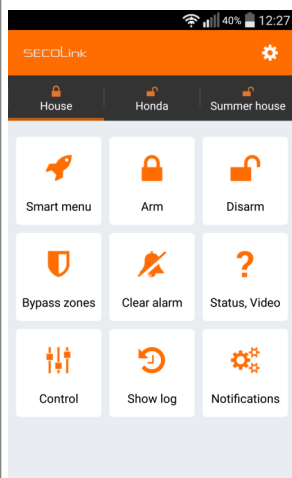
GSV5 operating mode: KEYBUS compatible; SERIAL port compatible	
A?	Away arming. It will also trigger the output called <i>Arm</i> (if programmed). Example: 1111A - arm all partitions in <i>Away</i> mode, 1111A14 - arm 1st and 4th partitions.
AS?	Stay arming. It will also trigger the output called <i>Arm</i> (if programmed). Example: 1111AS - arm all partitions in <i>Stay</i> mode, 1111AS14 - arm 1st and 4th partitions.
D?	Disarm. It will trigger the output called <i>Disarm</i> (if programmed). Example: 1111D - disarm all partitions, 1111D14 - disarm 1st and 4th partitions.
I	Get system status. Example: 1111I .
ON?	Turn On the output called <i>Manual</i> (ON1 - PGM1, ON2 - PGM2). SMS example: 1111ON1.
OF?	Turn Off the output called <i>Manual</i> (OF1 - PGM1, OF2 - PGM2). SMS example: 1111OF2.
B?	Bypass zone. Example: 1111B1 - bypass 1 st zone, 1111B1 B2 - bypass 1 st and 2 nd zones.
U?	Remove zone bypass. Example: 1111U1 - remove 1 st zone bypass, 1111U1 U2 - remove 1 st and 2 nd zone bypass.
F	Send SMS to a phone number via GSV5. Example: 1111Fphone number Text message. <i>Phone number</i> in the text message must be entered in international format, "+" sign is added automatically. Example: 1111F404 Balance.

SMS commands for www.alarmserver.net	
BI	Get system BI number. Example: 1111BI .
REGISTER	Register the system on www.alarmserver.net. Example: 1111REGISTER .
SENDTECH	Send technical information to www.alarmserver.net. Example: 1111SENDTECH .
SENDLOG	Send the event log to www.alarmserver.net. Example: 1111SENDLOG .

Personal user settings	
SD?	Notification via SMS about the system disarming (SD1 - enable, SD0 - disable). Example: 1111SD1 .
SA?	Notification via SMS about the system arming (SA1 - enable, SA0 - disable). Example: 1111SA0 .
SV?	Notification via SMS during an alarm (SV1 - enable, SV0 - disable). Example: 1111SV1 .
ST?	Notification via SMS for any system troubles (ST1 - enable, ST0 - disable). Example: 1111ST0 .
SC?	Notification via a phone call during an alarm (SC1 - enable, SC0 - disable). Example: 1111SC1 .
SM?	Mandatory notification via a phone call during an alarm (SM1 - enable, SM0 - disable). Example: 1111SM0 .
SP?	Test notifications via SMS (SP1 - enable, SP0 - disable). Example: 1111SP1 .
SL?	Periodic test schedule (SL1 - every day, SL2 - every two days, SL3 - every three days, SL4 - every four days). Example: 1111SL1 .
SF?	Forward SMS with unknown text to the user (SF1 - enable, SF0 - disable). Example: 1111SF0 .

Phonebook settings	
SN?	Add a new phone number under the chosen phonebook position (SN1 - SN9). Example: 1111SN1370000000 - the phone number must be entered in the international format, "+" sign is added automatically. The 10th phone number could be programmed with software GSV5 Loader.
SR?	Delete a phone number from a chosen phonebook position (SR1 - SR9) or use SR0 to delete all phone numbers. The 10th phone number could be programmed with software GSV5 Loader. Example: 1111SR1 .
SI	Get SMS with all saved numbers in the phonebook. Example: 1111SI .
SH0	Answer all phone numbers. Example: 1111SH0 .
SH1	Answer only phone numbers saved in the phonebook. Example: 1111SH1 .

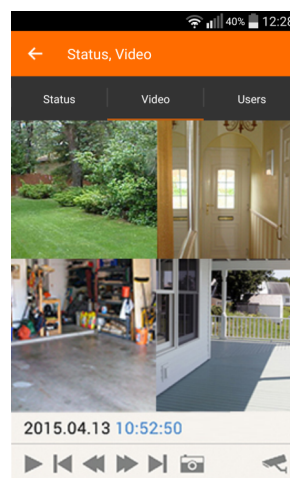
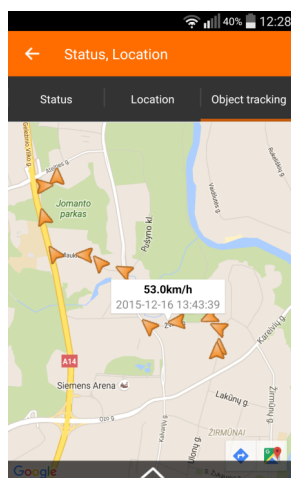
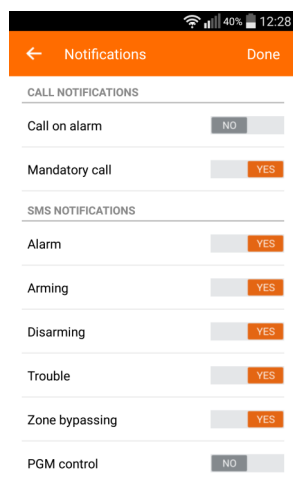
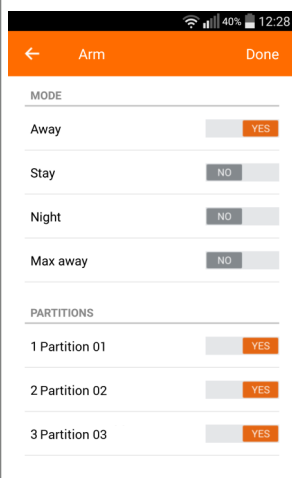
Smartphone application



SECOLINK PRO application allows the user to control and monitor SECOLINK security system directly from the smartphone. Intruder alarm system and car alarm system can be both controlled by the application. Application uses SMS and/or data service, therefore charges may apply.

Main features:

- ◆ Arm/disarm your object;
- ◆ Receive alarm, trouble, and other notifications;
- ◆ Monitor your object status;
- ◆ Bypass zones;
- ◆ Control your devices;
- ◆ Locate your car (GSW-CAN);
- ◆ Explore the event log: alarms, troubles, and other events;
- ◆ Control up to 4 objects (home, business, car);
- ◆ Video to verify an alarm;
- ◆ Smart interface - most recently used commands.



Links to download:

for iPhone:



for Android:

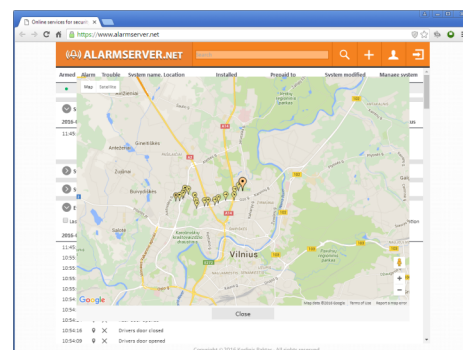
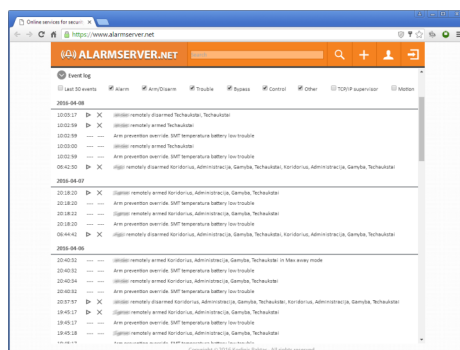
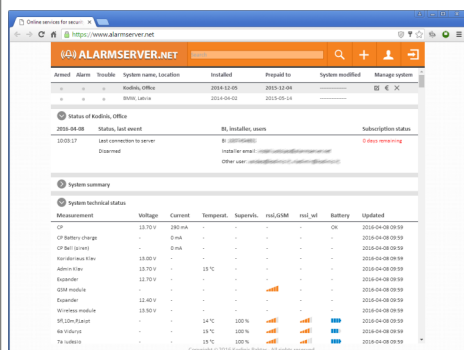


Online services for security systems - www.alarmserver.net

ALARMSEVER.NET is based on machine to machine technology that allow both, alarm system (intruder or car alarm) and server, to communicate. Security system devices send its status or technical information automatically or manually by request. Communication with server uses a data transfer service, therefore charges may apply.

Main features:

- ◆ The end user is able to remotely monitor up to 5 security systems;
- ◆ All protected property with the intruder or car alarm system can be monitored with one user's account;
- ◆ The server can store the system event log, technical information, videos to verify alarms, car tracking information, and motion event log that monitors a presence, for example, an elderly family member in a summer house;
- ◆ System user can login to the server from any place in the world where internet connection is available;
- ◆ The user can check wireless sensor's communication data and precisely evaluate system security level. This can only be done if wireless sensors are installed;
- ◆ An installer can examine system status and with user's permission update system configuration.



System compliance and warranty



Kodinis Raktas UAB, manufacturer of SECOLINK Intruder Alarm System, offers a Warranty for a term of twenty-four months. It declares, that product SECOLINK complies with essential EU directive and EU standards EN 50131-1. For more information visit manufacturer's website at www.kodinis.lt, or www.secolink.eu for a complete text of declaration. SECOLINK Intruder Alarm System is designed and manufactured in Lithuania.